

Axiom USB External/Mobile Drive Installation and Formatting Instructions for Microsoft Windows XP, Win2000 and Win98SE

1. Connect the drive to your computer via the USB or Firewire Port. If you are using the 3.5" External drive, make sure the power adapter is plugged in and the drive is turned on.

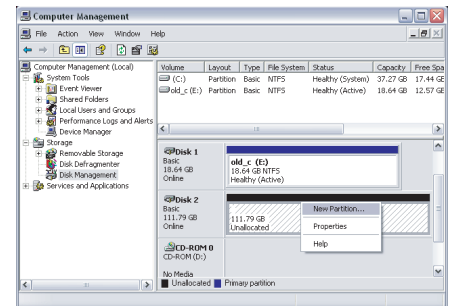
Note: When using Windows 98SE you will have to install the USB driver from the setup utility on the CD ROM that was included with the drive.

Warning! The following steps will erase all data stored on the disk. Please back-up all important information before performing these steps

2. Right click on **My Computer** and go to **Manage**.

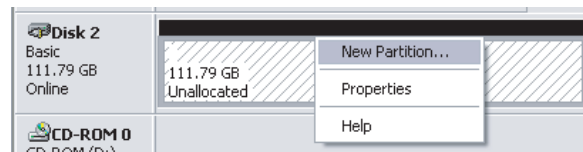
3. From the **Computer Management** window, select **Disk Management** located in the Storage Group.

Note: If this is the first time this drive is being formatted, Windows 2000 will launch the Disk Signature Wizard (Disk Initialization Wizard in WinXP) Click Next, then Finish to complete the Disk Initialization Wizard.



4. Once the disk is initialized, right click on the available space and select **New Partition**

5. This will bring up the Create Partition Wizard.



6. Select Primary Partition and click next to specify partition size and click next.

Note: It's recommended that you leave the partition set to the maximum available size, unless you want multiple partitions on the same drive.

7. Assign a drive letter and click next. (Make sure you assign a letter that is not already in use)

8. Select Format this partition and select a file system.

FAT32

FAT32 is compatible with Windows 98SE, Windows ME, Windows 2000 and Windows XP; However it has a 32GB partition limit and may not be as stable as NTFS

NTFS

NTFS is a newer more stable file system that is compatible with only Windows 2000 and Windows XP. It has fewer limitations than FAT32 and will allow partitions larger than 32GB.

9. Click next, then finish. Disk Management will create the partition and begin formatting the drive. The light will flash for a minute, and once completed, the light will remain solid and the drive will now appear under My Computer as the new drive letter that you selected and be ready for use.